



Grand National Championships, presented by Yamaha

GENERAL STADIUM INFORMATION - UPDATED

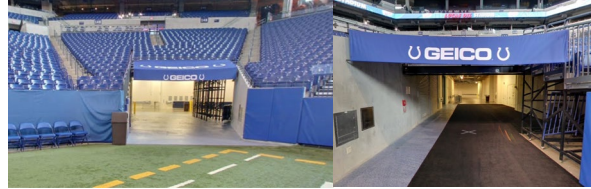
November 14-16, 2024 – Lucas Oil Stadium – Indianapolis, IN



PICTURE UNAVAILABLE

WARM-UP AREAS:

Warm-up is located in exhibition halls 1 and 2. All physical warm-up areas and primary musical areas are concrete surfaces. Optional musical warm-up rooms and front ensemble warm-up rooms are carpeted.



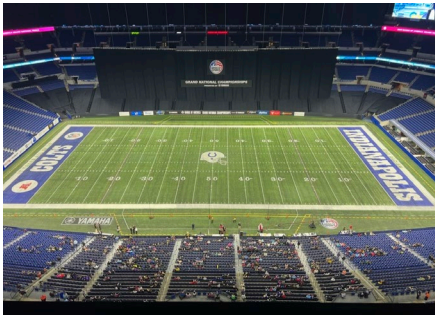
FIELD ENTRY/EXIT GATES:

Front Ensemble/Prop Field Entry (Northwest Tunnel): 12' high, 15' wide

Band Field Entry (Northeast Tunnel): 8' high, 10' wide

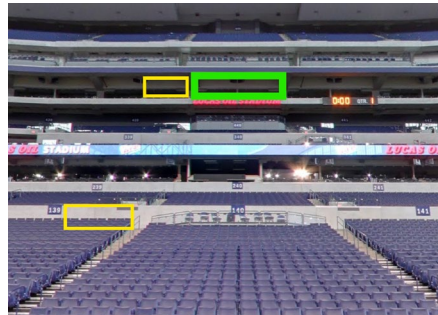
Band/Front Ensemble/Prop Field Exit (Southwest Tunnel): 12' high, 14' wide

*The overhangs in the left picture will be removed for the event. Band Exit is a mirror image of Front Ensemble/Prop Entry



FIELD MARKINGS:

The field will have 3 sets of hash marks: Pro hash marks at 70'9" from both sidelines, in white paint, including the marks for each yard. Texas HS/Collegiate hash marks, 60' from both sidelines, in yellow paint (on each 5-yard line) High school hash marks at 53'4", dividing the field into thirds, in white paint, including the marks for each yard.



DIRECTOR VIEWING AREA AND JUDGING AREA:

-The Director Viewing Area is in Section 139 rows 22, 23, 24, accessible from the stairs at the 50-yard line. (yellow box)

- The Director Audio Control is in Upper Suite 39A accessible via NW elevator with a sticker only. (yellow box)

-Judges will be in Upper Suites in section above the Red Lucas Oil Sign (between 400/500 levels). (green box)